

FOLKLANDS

LAURIER ROAD, CROYDON
GUIDE PRICE £389,950









Laurier Road, Croydon

Approximate Gross Internal Area
77.1 sq m / 830 sq ft

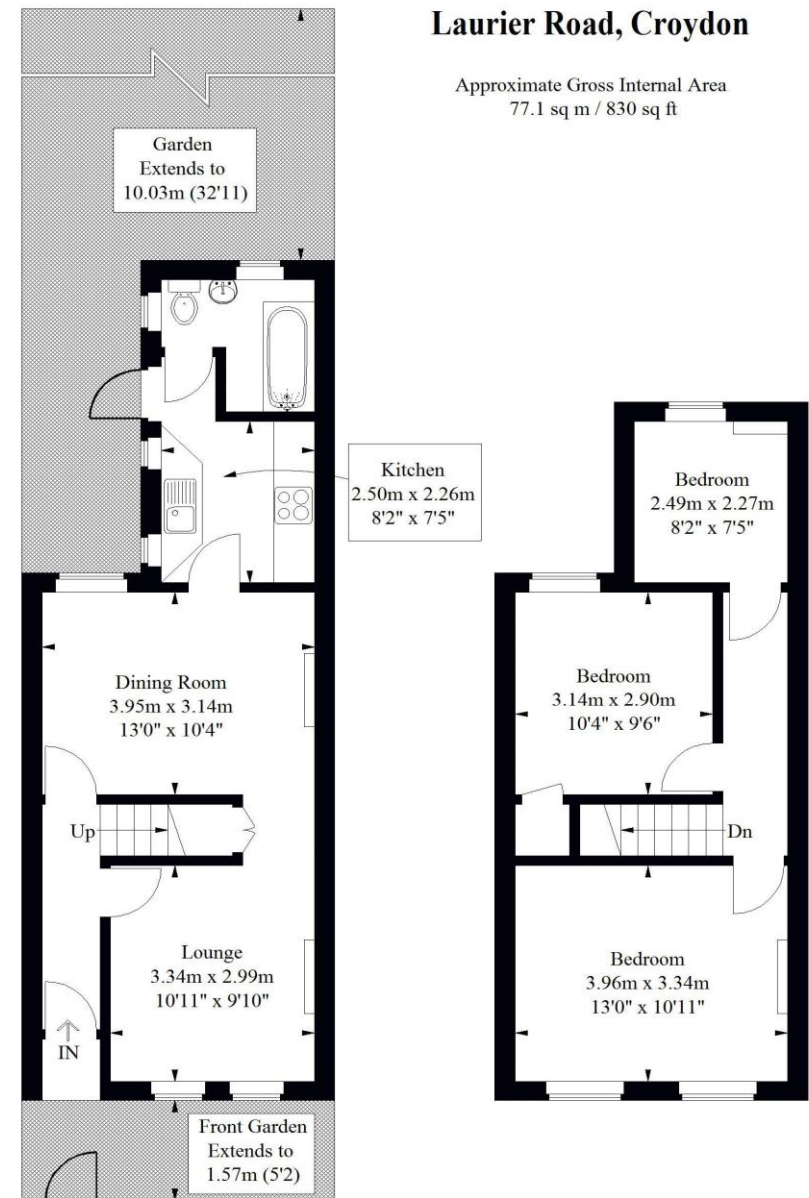


Illustration for identification purposes only, measurements are approximate, not to scale.
FloorplansUsketch.com © 2018 (ID402788)

INFO@FOLKLANDS.COM - 020 8686 0002

362 BRIGHTON ROAD - SOUTH CROYDON - CR2 6AL

- ❖ EPC EER D
- ❖ END OF TERRACE HOUSE
- ❖ 0.9 MILES FROM EAST CROYDON STATION
- ❖ 0.4 MILES FROM THE LOCAL TRAM STOP
- ❖ WELL PRESENTED THROUGHOUT
- ❖ SOUTH WEST FACING REAR GARDEN
- ❖ TWO SEPARATE RECEPTION ROOMS
- ❖ FULLY DOUBLE GLAZED
- ❖ QUIET CUL-DE-SAC LOCATION
- ❖ LOFT STORAGE SPACE

A well presented three bedroom period end of terrace house, situated within this quiet cul-de-sac, conveniently located 0.9 miles from East Croydon train station, and circa 0.4 miles from the local tram stop.

This bright & airy home benefits from side access, a 32' south west facing rear garden, is fully double glazed, and with ample living space we feel this property would make an ideal first home.

The accommodation comprises three bedrooms, loft storage space, two reception rooms, an under stairs storage cupboard, a modern fitted kitchen, a three piece bathroom suite, and a private rear garden with a patio area, lawn, large shed and double gates providing access to the side passageway.

Furthermore, this property sits within close proximity of a number of local schools, and is within walking distance to the open green spaces of Ashburton Park.

